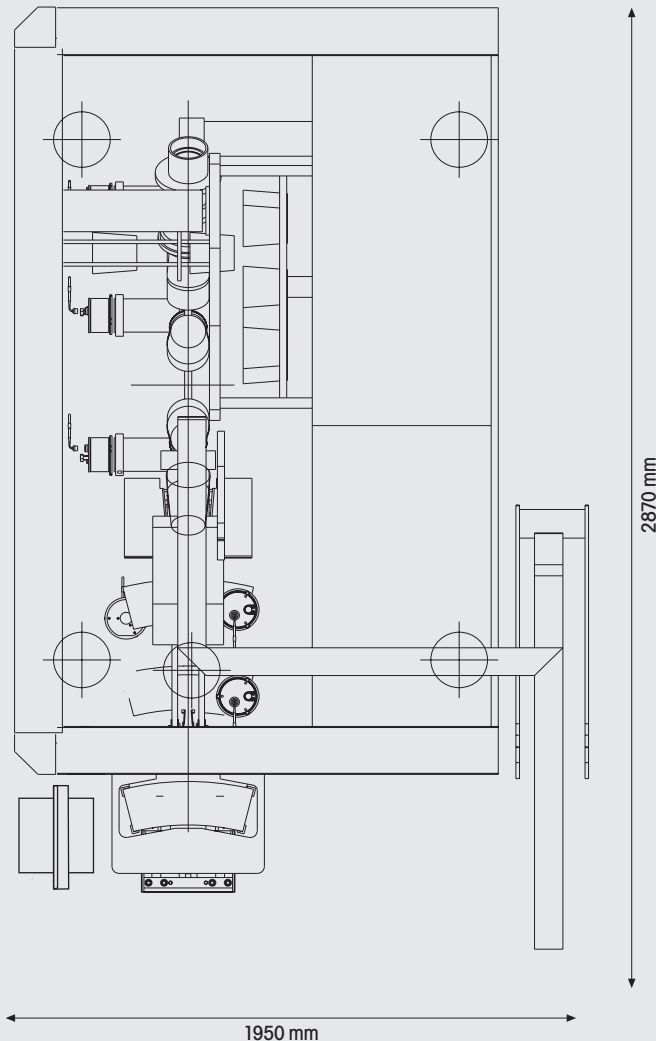




BMP 100

COMPACT



Layout drawing does not show switch cabinet and other accessories.

The **BMP 100 Compact** works from pre-printed blanks and was specially designed for the economic production of hot and cold drinking paper cups with a speed of up to 180 cups per minute.

Michael Hörauf Maschinenfabrik GmbH & Co. KG

Mozartstraße 39 - 41 · D - 73072 Donzdorf - Germany

Phone: +49(0) 7162 / 942-0 e-mail: sales@hoerauf.com

Fax: +49(0) 7162 / 942-510 www.hoerauf.com

Technical changes reserved.

Technical specification:

Capacity:

up to 180 cups/min

Volume:

3 oz - 32 oz, other sizes on request

Size range:

Top curl diameter:

50 - 105 mm

Bottom diameter:

36 - 80 mm

Cup height:

40 - 178 mm

Bottom height:

5 - 12 mm

Taper:

3,5° - 9°

Average power consumption:

approx.: 26 KW

Compressed air requirements:

approx.: 3000 l/min. at 6 bar

Water requirements:

approx.: 2 l/min. at 1,5 bar (closed system)

Vacuum requirements:

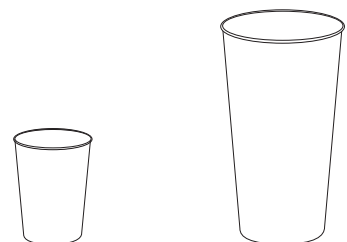
approx.: 1400 l/min at 0,8 bar

Weight of machine:

approx.: 6000 kg

Weight of switch cabinet:

approx.: 500 kg



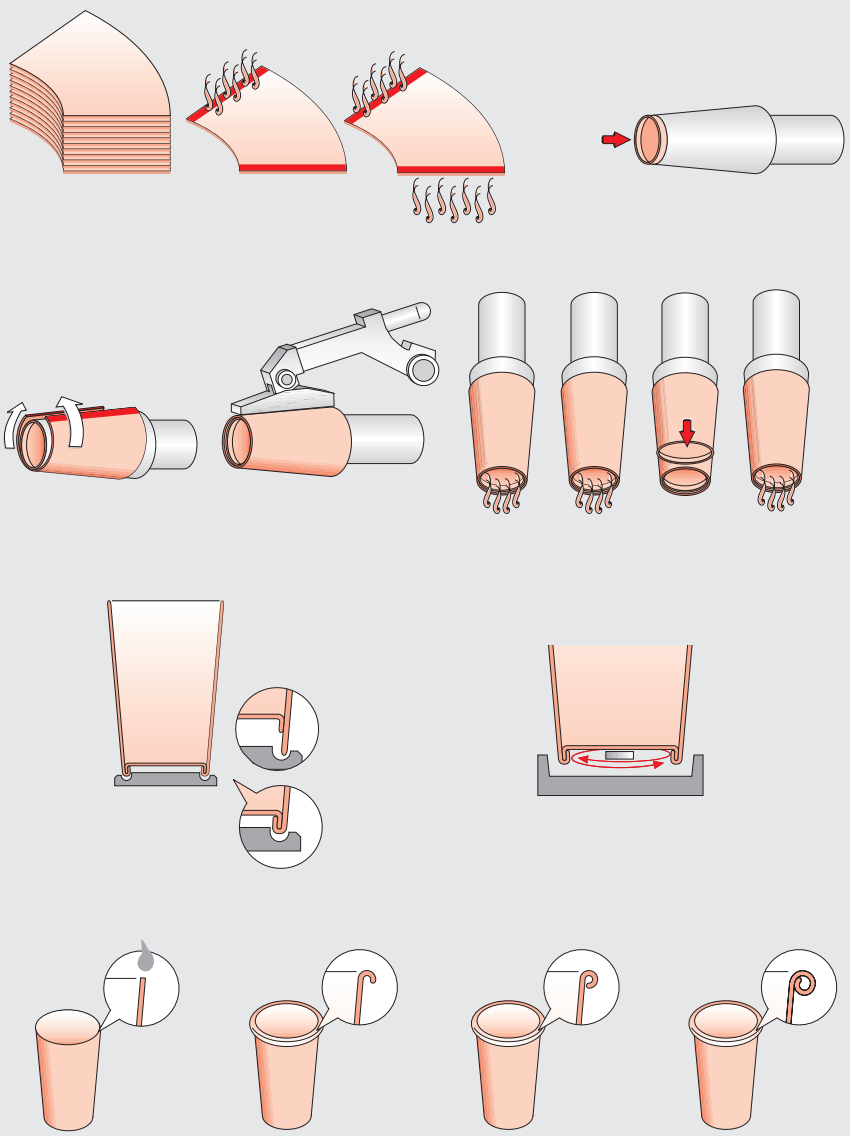
HÖRAUF

the art of engineering



BMP 100

COMPACT



Michael Hörauf Maschinenfabrik GmbH & Co. KG
 Mozartstraße 39 - 41 · D - 73072 Donzdorf - Germany
 Phone: +49(0) 7162 / 942-0 e-mail: sales@hoerauf.com
 Fax: +49(0) 7162 / 942-510 www.hoerauf.com